

Activities 2004

Minebea Group of Companies (Thailand)

1. Offering wooden boxes to artillery center at Lopburi to be construction materials. (Lopburi Factory)



2. Installation of auto bar feeder for sending end bar (17 cm) used to be scrap materials that can save cost of raw material.

(Bang pa-in Factory)



3. Recycle of oil tank to waste container and providing to Lopburi district. (Lopburi Factory)



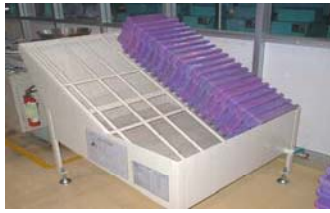
4. Reused of wooden boxes by using in guard house construction. (Lopburi Factory)



5. Changing to sub components packaging from paper box to plastic box to prevent breaking. (Ayutthaya Factory)



6. Reused of SUNCUT 200S grinding. (Ayutthaya Factory)



7. Creating tray for box place to filter oil and reuse it. (Bang pa-in Factory)



8. Reduction of fluorescent lamp at material shield storage area. (Bang pa-in Factory)



9. Installation of plastic shutter at the 2nd grinding exit to solve air leaking problem. (Bang pa-in Factory)



10. Installation of inverter to decrease electric power. (Lopburi Factory)



11. Changing grinding barrel process to be automatic flow. (Lopburi Factory)



12. Painting roofs of surface treatment building to reduce heat from sun light. (Rojana Factory)



13. Setting ethanol oil pan to protect ethanol leaking. (Lopburi Factory)



14. Setting oil pan at machine to protect oil leak. (Lopburi Factory)



15. Setting oil box under hydraulic & lubricant tap. (Bang pa-in Factory)



16. Installation of cover at machine to protect oil mist dispersion. (Bang pa-in Factory)



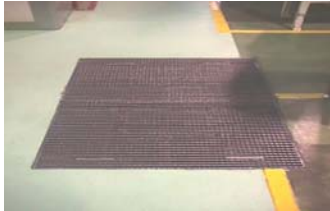
17. Installation of chemical cover with vapor collection pipe to protect chemical dispersion. (Lopburi Factory)



18. Sealing the door of machine to protect oil spill. (Bang pa-in Factory)



19. Improvement of air return to protect sliding. (Bang pa-in Factory)



20. Installation of exhaust duct at soldering process to reduce air pollution. (Lopburi Factory)



21. Building gas station at canteen 1 to be a restricted area. (Lopburi Factory)



22. Improvement of drain gutter at canteen. (Lopburi Factory)



23. Planting to increase green area. (Lopburi Factory)



24. Installation of sound proof box to decrease noise from machine operation. (Lopburi Factory)



25. Setting of alarm at drain gutter of barrel process to protect over flow of water. (Bang pa-in Factory)

Drain gutter (normal)



Drain gutter (over flow)



Alarm at barrel room

